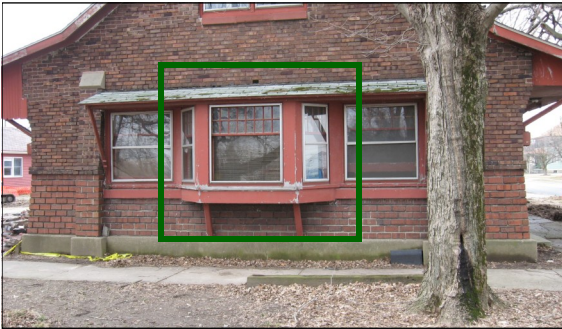


100th Anniversary

Russiaville Interurban Station

Project Timeline



Window Move

The Ticket Agent's window must be moved from east end of building to original location on south side to comply with DNR requirements before applying for National Historic Register in October 2011. Work is scheduled to begin in August. Cost \$10,000 to \$14,000. We have received several small grants to make this move possible. However, this work will not count toward any other matching requirements.

Transportation Grant

We will be applying for a \$500,000.00 grant from INDOT to cover exterior preservation and interior rehabilitation. The application is due in October and we'll know in February 2012 if we are awarded the grant. This grant requires a 20% match from local or other funds.



South side opening where window originally sat.



Building as it appeared when new—circa 1912.

Architect — Brent Mather
Brenner Designs
Indianapolis, IN

OCRA Grant

In February 2012, we hope to be applying to the Office of Community and Rural Affairs for an additional \$125,000. These funds are restricted to outside reconstruction efforts. Applying for the grant depends on the town of Russiaville or Howard County having an open spot in the grant cycle because the monies are only available to municipalities. If we are successful with this grant, it could provide the match for the INDOT grant, reducing the local match to between \$14,000 and \$26,000. We will know by April if we will be awarded this grant. Construction will not start until the funds have been secured to complete the project.

To assist financially send check or money order to Russiaville Historical Society, Inc., P.O. Box 221, Russiaville, IN 46979.

For other ways to assist in the restoration of this local historical "gem" email marsha@russiavillehistory.org or call 765-249-2710.



Preserving the Past

www.russiavillehistory.org